

Charlton®



SUBMERSIBLE WATER BUTT PUMP MODEL NO: CWBP300

PART NO: 7230400

OPERATION & MAINTENANCE INSTRUCTIONS

UK
CA | CE



ORIGINAL INSTRUCTIONS

GC1221 Rev 1

INTRODUCTION

Thank you for purchasing this CLARKE Water-Butt Pump.

This pump is designed for pumping clean water only, including chlorinated water from swimming pools but is not to be used for drinking water or for the delivery of foodstuffs.

It is NOT designed for pumping slurry, sludge, mud or heavily polluted water, or any water containing chemicals or other acidic contaminants including salt water.

SPECIFICATIONS

Voltage	230V~50Hz
Rated Power	400 W
Maximum Head Height	11 m
Maximum Depth	7 m
Maximum Flow	37 l/min with hose connected
Maximum Water Temperature	35°C
Maximum Particle Size	0.5 mm
Weight	4.5 kg
Cable Length	10 m
Dimensions (D x W x H)	180 x 155 x 665 (min)- 853 (max) mm
Outlet Thread Diameter	3/4 " BSP
Outlet coupling type	3/4 " BSP ball valve

ENVIRONMENTAL RECYCLING POLICY



Through purchase of this product, the customer is taking on the obligation to deal with the WEEE in accordance with the WEEE regulations in relation to the treatment, recycling & recovery and environmentally sound disposal of the WEEE.

In effect, this means that this product must not be disposed of with general household waste. It must be disposed of according to the laws governing Waste Electrical and Electronic Equipment (WEEE) at a recognised disposal facility.

SAFETY INSTRUCTIONS

GENERAL

1. Read all instructions before use and save these instructions for future use.
2. An approved residual current device (RCD) which has a tripping current of 30mA **MUST** be used for all operations.
3. ALWAYS make sure that your hands are dry when connecting or disconnecting from the mains supply.
4. NEVER pull the mains lead to disconnect the pump from the mains socket.
5. The mains plug must be kept away from the water at all times.
6. DO NOT allow children or unauthorised people to touch the pump, cables or connections.
7. Disconnect the pump from the mains supply when not in use.
8. If necessary have the pump repaired by a qualified person.
9. Keep the mains lead away from heat, oil and sharp edges.
10. If you have to use an extension lead with this product, it must be designed for outdoor use and incorporate a cable suitable for use with Class I appliances.
11. Disconnect the pump from the electrical supply during cleaning or maintenance.

PUMP SPECIFIC

1. DO NOT pump explosive / flammable liquids or chemicals.
2. NEVER allow the pump to run dry or operate out of the water.
3. Submersible pumps should always be submerged and stored vertically.
4. ALWAYS check the plug and cable for damage before use.
5. DO NOT use the pump if damaged. Refer to qualified service personnel for repair.
6. NEVER carry or lower the pump by the power cable or float switch always use the handle.
7. NEVER insert your fingers into the pump whilst it is connected to the mains.
8. NEVER use the submersible pump in a swimming pool when there are people or animals in the pool.
9. Keep the pump clear of any sediment by standing it on a platform or brick or suspending it at a suitable depth.
10. DO NOT use the pump if the water is liable to freeze as this can cause damage to the pump. Remove the pump from the water and store it in a frost free location.

ELECTRICAL CONNECTIONS



WARNING: READ THESE ELECTRICAL SAFETY INSTRUCTIONS THOROUGHLY BEFORE CONNECTING THE PRODUCT TO THE MAINS SUPPLY.

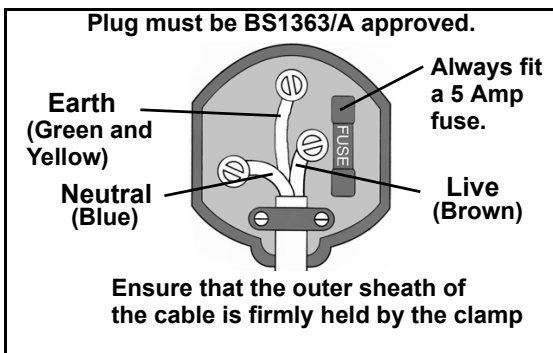
Connect the mains lead to a standard, 230 Volt (50Hz) electrical supply through an approved 13 amp BS 1363 plug, or a suitably fused isolator switch. If the plug has to be changed because it is not suitable for your socket, or because of damage, it must be removed and a replacement fitted, following the wiring instructions shown below. The old plug must be discarded safely, as insertion into a power socket could cause an electrical hazard.



**WARNING: THE WIRES IN THE POWER CABLE OF THIS PRODUCT ARE COLOURED IN ACCORDANCE WITH THE FOLLOWING CODE:
BLUE = NEUTRAL BROWN = LIVE YELLOW AND GREEN = EARTH**

If the colours of the wires in the power cable do not agree with the markings on the plug.

- The BLUE wire must be connected to the terminal which is marked N or coloured black.
- The BROWN wire must be connected to the terminal which is marked L or coloured red.
- The YELLOW AND GREEN wire must be connected to the terminal which is marked E or \perp or coloured green.



AN APPROVED RESIDUAL CURRENT DEVICE (RCD) WHICH HAS A TRIPPING CURRENT OF LESS THAN 30 mA MUST BE USED.

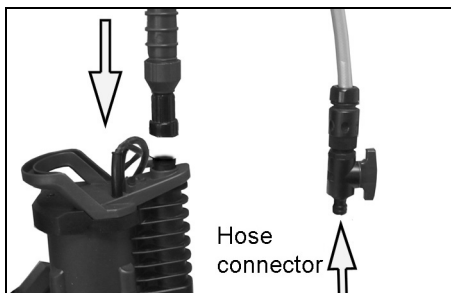
If you are unsure, consult a qualified electrician. DO NOT try to do any repairs.

PREPARATION

Remove all packaging and make sure that the product has no visible damage. Dispose of all packaging appropriately.

ATTACHING THE TUBE AND HOSE

1. Screw the discharge tube/elbow onto the outlet port as shown.
2. Connect a suitable garden hose (not supplied) to the hose connector.
 - Suitable hoses are available from your local Clarke dealer.



POSITIONING THE PUMP

1. Lower the pump into the water butt with the outlet elbow over the side of the water butt.
 - Ensure the pump is positioned with adequate space so that the movement of the float switch is not restricted - recommended minimum area of 50 x 50 cm.
2. Connect the plug to the mains supply.
 - Always use a high sensitivity residual current device (RCD) which has a tripping current of 30mA.



USING THE PUMP



WARNING: CHECK THE PUMP FOR DAMAGE BEFORE USE, DO NOT USE THE PUMP IF IT IS DAMAGED IN ANY WAY.

WARNING: THE WATER BEING PUMPED WILL BE POLLUTED IF THIS PUMP BECOMES DAMAGED AND ANY LUBRICANT WITHIN THE PUMP ESCAPES.

1. Switch the mains power supply on.
 - The pump will begin to discharge water.
 - As the water level falls, so will the float switch until it stops the pump.
2. When pumping is finished, disconnect the pump from the power supply.

IMPORTANT: Do not allow the pump to run dry.

MAINTENANCE



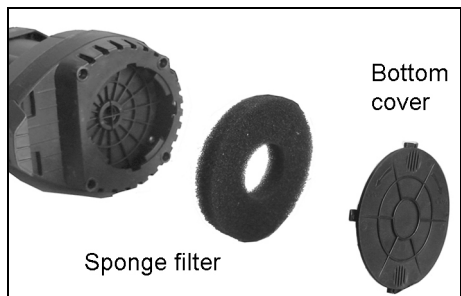
WARNING: BEFORE CHECKING THE CONDITION OF THE PUMP, ENSURE IT IS UNPLUGGED FROM THE POWER SUPPLY.

This pump should require no maintenance other than regular cleaning.

CLEANING

1. Check the pump installation regularly to ensure the water inlet is clear of leaves or other debris.
2. Twist and lift out the bottom cover before removing the sponge filter. Clean out the cavity and remove any debris.

NOTE: Do not attempt to repair the pump yourself as you may damage the waterproof seal and invalidate your guarantee. Therefore we recommend you contact your CLARKE dealer or the CLARKE Service Department.



STORAGE

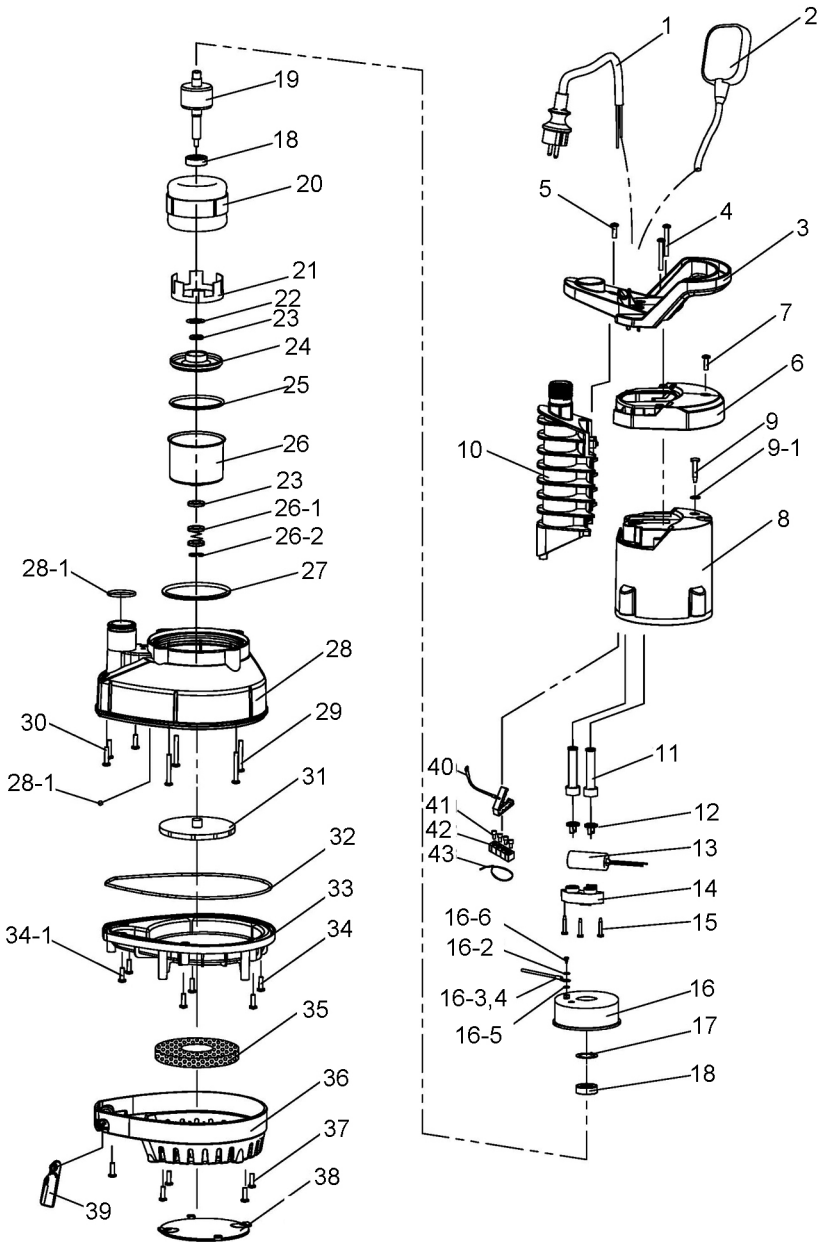
When the pump is not being used for extended periods, clean and dry it thoroughly and store it indoors. If the pump is left in water, it should be run occasionally to prevent it from seizing up in areas with a hard water supply.

FAULTFINDING

PROBLEM	SOLUTION
PUMP WILL NOT START	<ol style="list-style-type: none">1. Make sure that the power is switched on.2. Check fuse (consult an electrician if in doubt).3. If an extension lead is fitted, check connections (consult an electrician if in doubt).4. Float switch may be jammed against side wall, or prevented from moving.5. If the pump still fails to start, consult your CLARKE dealer for advice.
PUMP WILL START BUT NOT PUMP	<ol style="list-style-type: none">1. Check that the inlet is not blocked.2. Check that the outlet is not clogged or obstructed.3. Air bubble in the pump, produced during immersion. Immerse the pump again, at an angle, and shake it whilst lowering to remove any air trapped in the system.4. Impeller may be damaged - Consult your CLARKE dealer.
PUMP WILL NOT STOP	<ol style="list-style-type: none">1. Float switch may be prevented from moving to the fully down position.2. Float switch may be faulty. Consult your CLARKE dealer for advice.
PUMP STOPS RUNNING	<ol style="list-style-type: none">1. Pump has run dry or float switch has cut in.
WATER DELIVERY IS POOR	<ol style="list-style-type: none">1. Blockage in hose.2. Suction opening blocked.3. Hosepipe kinked.4. Hose diameter too small

If this does not solve your problem, please contact the Clarke service department.

COMPONENT PARTS DIAGRAM

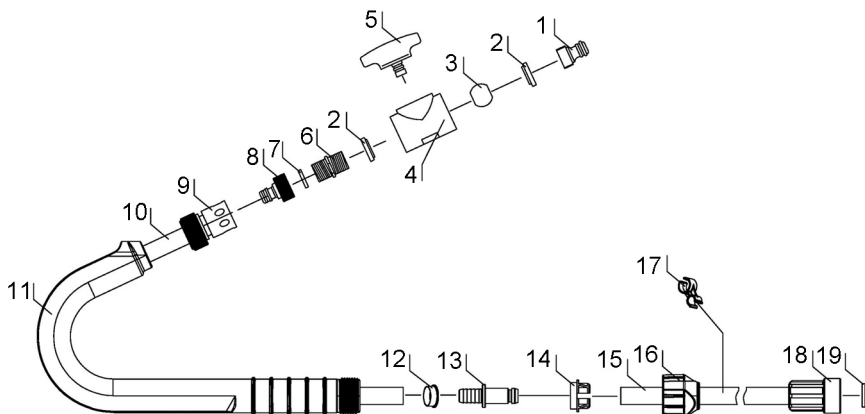


COMPONENT PARTS LIST

1	Power Cable
2	Float Switch
3	Handle
4	Self tapping screw
5	Self tapping screw
6	Cover plate
7	Self tapping screw
8	Rear pump cover
9	Self tapping screw
9.1	Washer
10	Outlet Connector
11	Cable Sheath 1
12	Cable Entry
13	Capacitor
14	Cable Block
15	Custom self-tapping screw
16	Rear cover
16.2	Gasket
16.3	Earth Wire
16.4	Connecting piece
16.5	Washer
16.6	Screw
17	Corrugated washer
18	Bearing
19	Motor rotor

20	Motor stator
21	Lining ring
22	Washer
23	Skeleton sealing ring
24	Aluminium lining ring
25	O-ring
26	Cover
26.1	Mechanical seal
26.2	Bead flange
27	O-ring
28	Main pump cover
28.1	O-ring
28.2	Steel Ball
29	Self tapping screw
30	Self tapping screw
31	Impeller
32	O-ring
33	Inner base
34	Self tapping screw
34.1	Self tapping screw
35	Sponge filter
36	Base
37	Self tapping screw
38	Bottom cover
39	Supporting leg

COMPONENT PARTS (DISCHARGE TUBE ASSEMBLY)



1	Hose connector
2	Sealing washer
3	Valve ball
4	Valve body
5	Valve knob
6	Valve end piece
7	O-ring
8	Connector G3/4"
9	Quick change connector assy
10	Flexible hose

11	Elbow
12	Lining ring
13	Connector
14	Compression fitting
15	Straight tube
16	Threaded connector
17	Clip
18	Connector G3/4"
19	Sealing washer

GUARANTEE

This product is guaranteed against faulty manufacture for a period of 12 months from the date of purchase. Please keep your receipt which will be required as proof of purchase. This guarantee is invalid if the product is found to have been abused or tampered with in any way, or not used for the purpose for which it was intended.

Faulty goods should be returned to their place of purchase, no product can be returned to us without prior permission. This guarantee does not effect your statutory rights.

DECLARATION OF CONFORMITY



Clarke[®]
INTERNATIONAL

Fitzwilliam Hall, Fitzwilliam Place, Dublin 2

DECLARATION OF CONFORMITY

This is an important document and should be retained.

We hereby declare that this product(s) complies with the following directive(s):

2014/30/EU Electromagnetic Compatibility Directive.
2014/35/EU Low Voltage Equipment Directive.
2011/65/EU Restriction of Hazardous substances.

The following standards have been applied to the product(s):

EN 55014-1:2017+A11, EN 55014-2:2015, EN 61000-3-3:2013+A1, EN IEC 61000-3-2:2019
EN 60335-1:2012+A11+A13+A14+A2, EN 60335-2-41: 2003+A1+A2, EN 62233:2008,
ISO 12100:2010, IEC 62321-1:2013, IEC 62321-2:2013, IEC 62321-4:2013+AMD1:2017 CSV
IEC 62321-5:2013, IEC 62321-6:2015, IEC 62321-7-1:2015, IEC 62321-7-2:2017, IEC 62321-8:2017,
ISO 17075:2017

The technical documentation required to demonstrate that the product(s) meet(s) the requirement(s) of the aforementioned directive(s) has been compiled and is available for inspection by the relevant enforcement authorities.

The CE mark was first applied in: 2018

Product Description: Submersible pump
Model number(s): CWBP300
Serial / batch Number: N/A
Date of Issue: 09/11/2021

Signed:

J.A. Clarke
Director

CWBP300 CE CLARKE DOC 110821

Page 1 of 1



Clarke[®]
INTERNATIONAL

Hemmel Street, Epping, Essex CM16 4EG

DECLARATION OF CONFORMITY

This is an important document and should be retained.

We hereby declare that this product(s) complies with the following statutory requirement(s):

Electromagnetic Compatibility Regulations 2016
Electrical Equipment (Safety) Regulations 2016
The Restriction of the Use of Certain Hazardous Substances in Electrical and Electronic Equipment Regulations 2012

The following standards have been applied to the product(s):

EN 55014-1:2017+A11, EN 55014-2:2015, EN 61000-3-3:2013+A1, EN IEC 61000-3-2:2019
EN 60335-1:2012+A11+A13+A14+A2, EN 60335-2-41: 2003+A1+A2, EN 62233:2008,
ISO 12100:2010, IEC 62321-1:2013, IEC 62321-2:2013, IEC 62321-4:2013+AMD1:2017 CSV
IEC 62321-5:2013, IEC 62321-6:2015, IEC 62321-7-1:2015, IEC 62321-7-2:2017, IEC 62321-8:2017,
ISO 17075:2017

The technical documentation required to demonstrate that the product(s) meet(s) the requirement(s) of the aforementioned legislation has been compiled and is available for inspection by the relevant enforcement authorities.

The UKCA mark was first applied in: 2021

Product Description: Submersible pump
Model number(s): CWBP300
Serial / batch Number: N/A
Date of Issue: 09/11/2021

Signed:

J.A. Clarke
Director

CWBP300 UKCA CLARKE DOC 110821

Page 1 of 1

A SELECTION FROM THE VAST RANGE OF

Clarke®

QUALITY PRODUCTS



AIR COMPRESSORS

From DIY to industrial, Plus air tools, spray guns and accessories.

GENERATORS

Prime duty or emergency standby for business, home and leisure.

POWER WASHERS

Hot and cold, electric and engine driven - we have what you need

WELDERS

Mig, Arc, Tig and Spot. From DIY to auto/industrial.

METALWORKING

Drills, grinders and saws for DIY and professional use.

WOODWORKING

Saws, sanders, lathes, mortisers and dust extraction.

HYDRAULICS

Cranes, body repair kits, transmission jacks for all types of workshop use.

WATER PUMPS

Submersible, electric and engine driven for DIY, agriculture and industry.

POWER TOOLS

Angle grinders, cordless drill sets, saws and sanders.

STARTERS/CHARGERS

All sizes for car and commercial use.

PARTS & SERVICE: 0208 988 7400

Parts Enquiries
Parts@clarkeinternational.com

Servicing & Technical Enquiries
Service@clarkeinternational.com

SALES: UK 01992 565333 or Export 00 44 (0)1992 565335

Clarke INTERNATIONAL Hemnall Street, Epping, Essex CM16 4LG
www.clarkeinternational.com